



WHY does Castilleja want to grow?

- With an acceptance rate in the 9th grade of only 10%, there are many more **talented, capable applicants** every year than we currently can admit.
- There are not enough **high quality all-girls educational opportunities** in the Bay Area. In addition, Silicon Valley businesses currently fall behind the rest of the country in female leadership.
- There are many **curriculum and diversity benefits of a larger enrollment size**, including additional course opportunities in essential STEAM curriculum.

WHAT are you proposing?

- We are proposing a four year plan to gradually increase our enrollment by 25 students a year, culminating in **540** total students.
- We are also proposing to expand our Traffic Demand Management (TDM) program, to ensure that **neighborhood impacts are consistent with levels from 2013 to today**.

HOW will your TDM program guarantee that there will be no noticeable impacts to the neighborhood?

- With a proven history of success in dramatically reducing our traffic impacts per student since 2012, we will regularly* review our progress with Palo Alto city leaders and community members to ensure our traffic calming efforts warrant additional yearly enrollment increases.
- Our annual growth will be contingent upon reaching benchmarks, and will be adjudicated by third party oversight

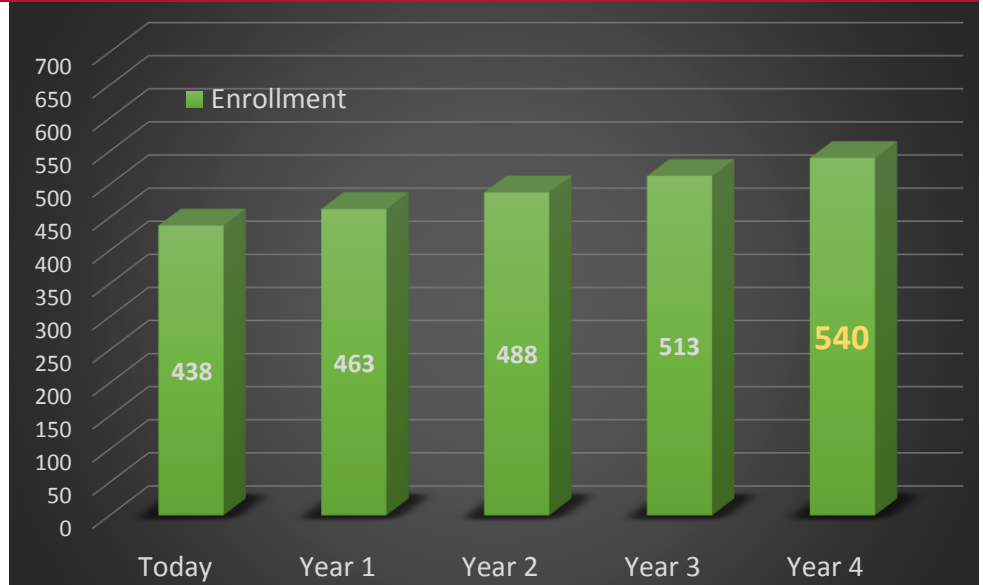
* Review timing to be dictated by the City of Palo Alto



Proposed Enrollment Plan

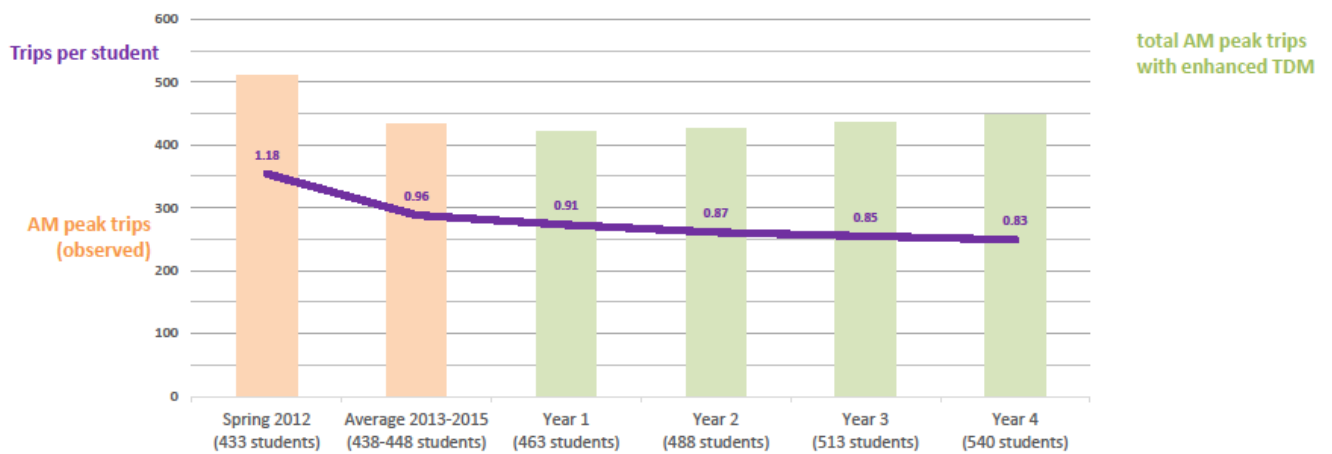
New CUP

Our annual growth will be contingent upon reaching benchmarks, and will be adjudicated by third party oversight



Enrollment, Trips, & TDM Reduction

AM trips with Expanded TDM Program



*Note: trips per student for 2013-2015 have been updated to reflect corrections to the analysis.